

The New Apartment

SMART LIVING IN SMALL SPACES



Universe

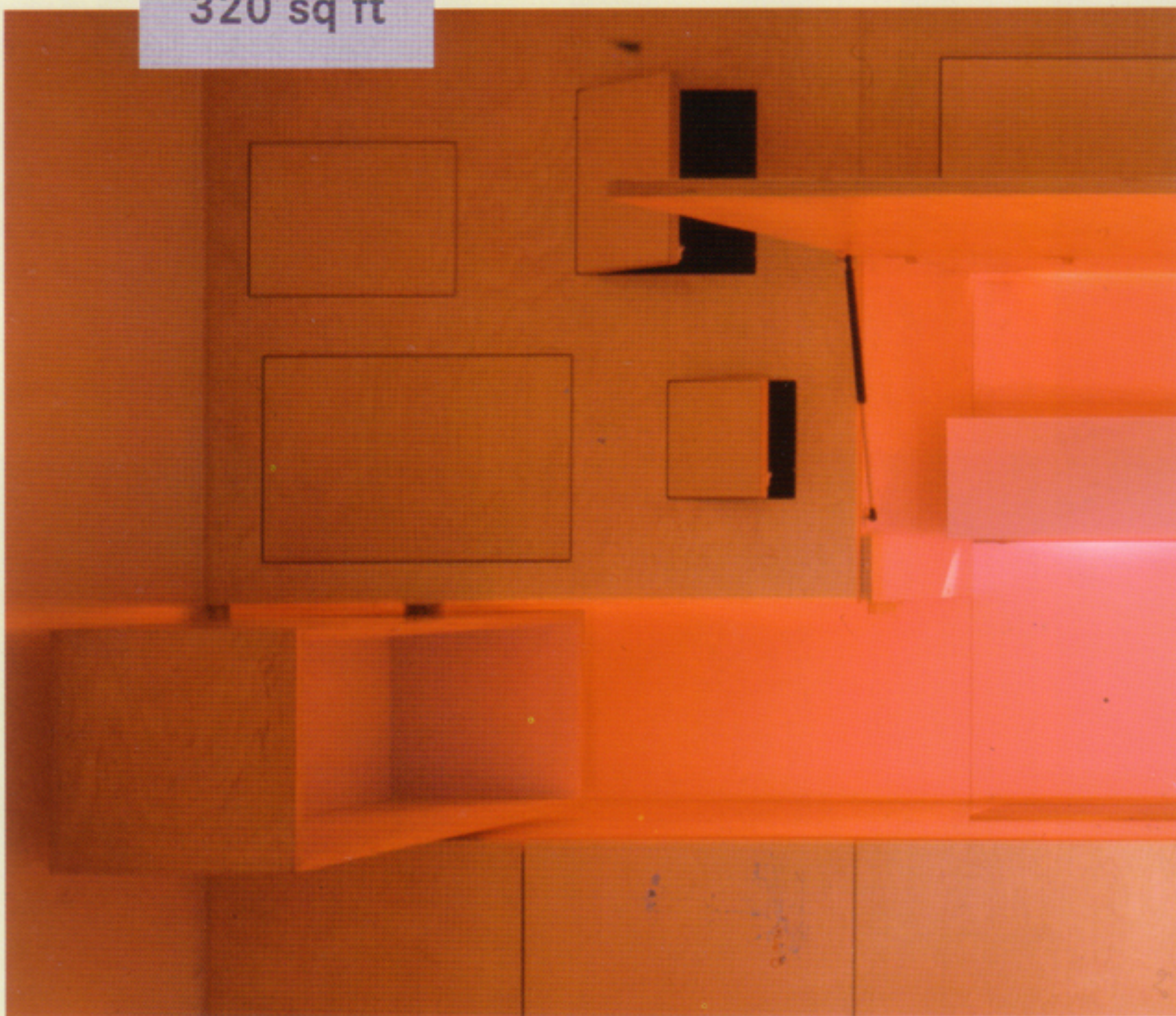
Montse Borràs

Apartment on Rue Cadet

Marchi Architectes

Paris, France, 2005

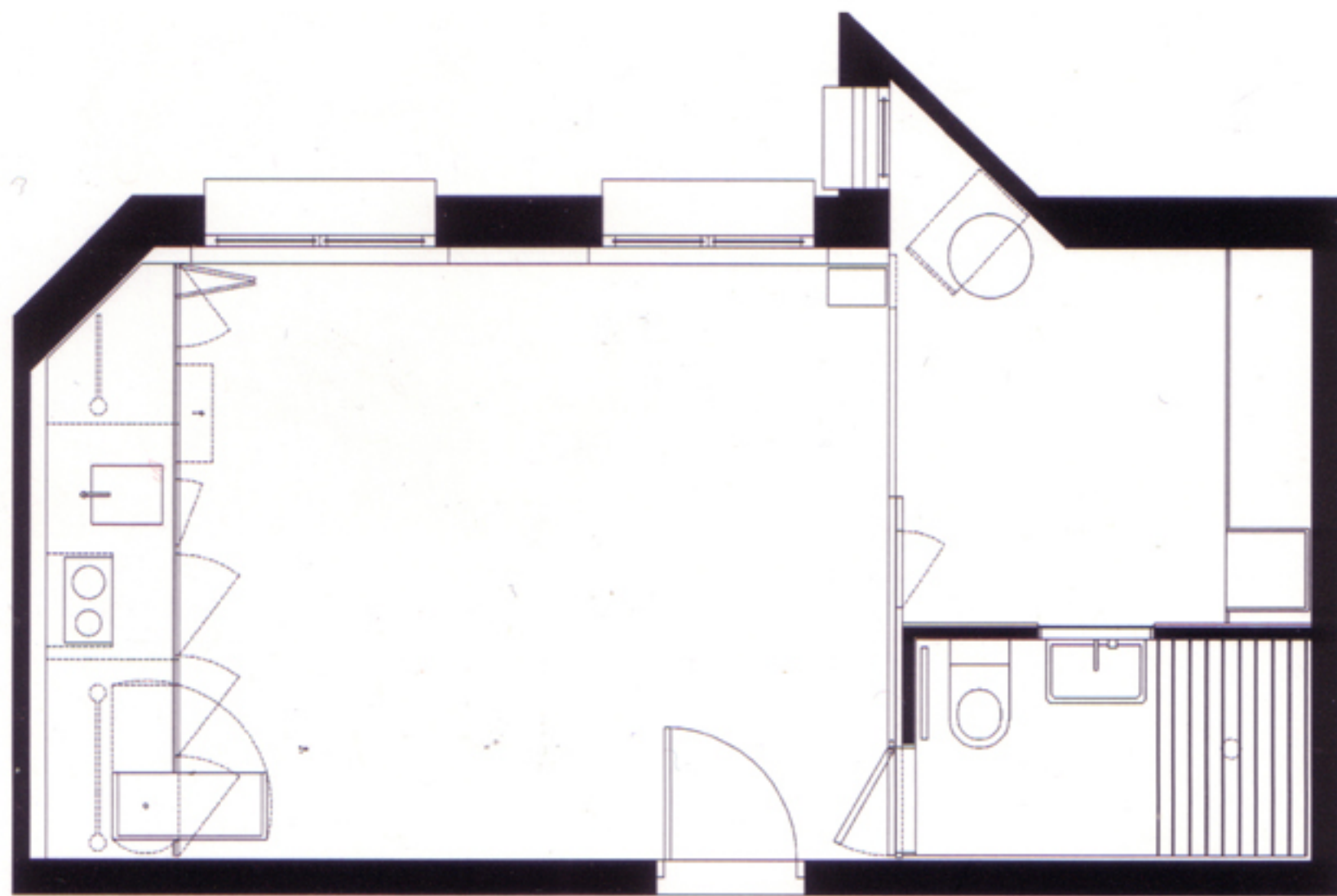
320 sq ft



Photographs © Yasmine Eid-Sabbagh

This 320-square-foot space integrates a multitude of functions into a single environment. The kitchen unit folds inward in the blink of an eye to become a wooden wall with a rectangular opening lit from within. Opposite, another ingenious construction functions as a bed alcove that can be closed off for greater privacy. The bed is elevated onto a one-and-a-half-foot platform that incorporates storage space for clothes and personal objects. An adjacent bathroom and shower with abundant natural light can be accessed either from the bedroom or main living area. A large opening in the platform and a foldout table make for a practical studio and working space. By allowing independent functions within one single space, this minute apartment was transformed into a comfortable and multifunctional residence.



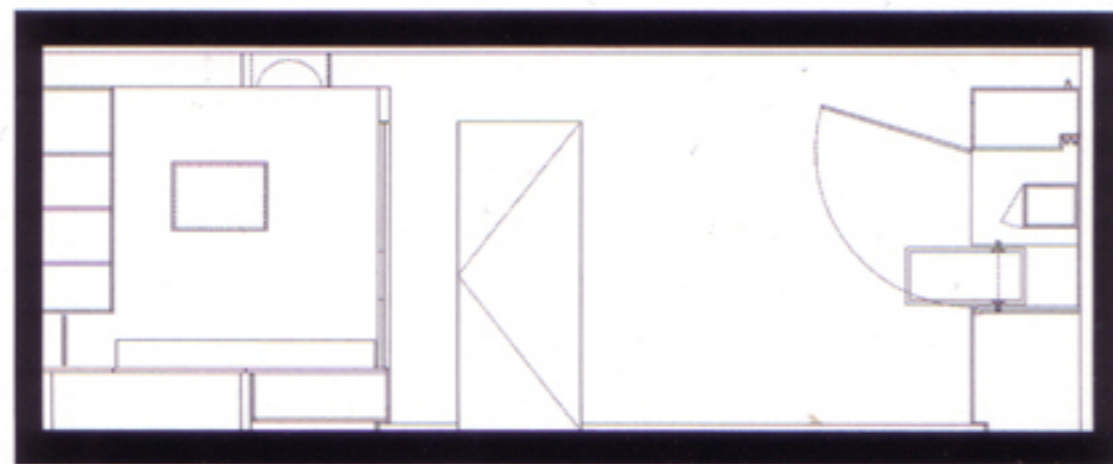


Floor plan





The bed is elevated on a sixteen-inch-tall platform, composed of several removable volumes, which constitute storage space. Next to this bedroom, the bathroom can be accessed from the bedroom and from the central space.



Sections

